



# MONTHLY MEMBERSHIP PROGRESS REPORT

District 14 M

Results as of: 5/31/2015

GMT: JERRY SMITH

LOCATION PENNSYLVANIA

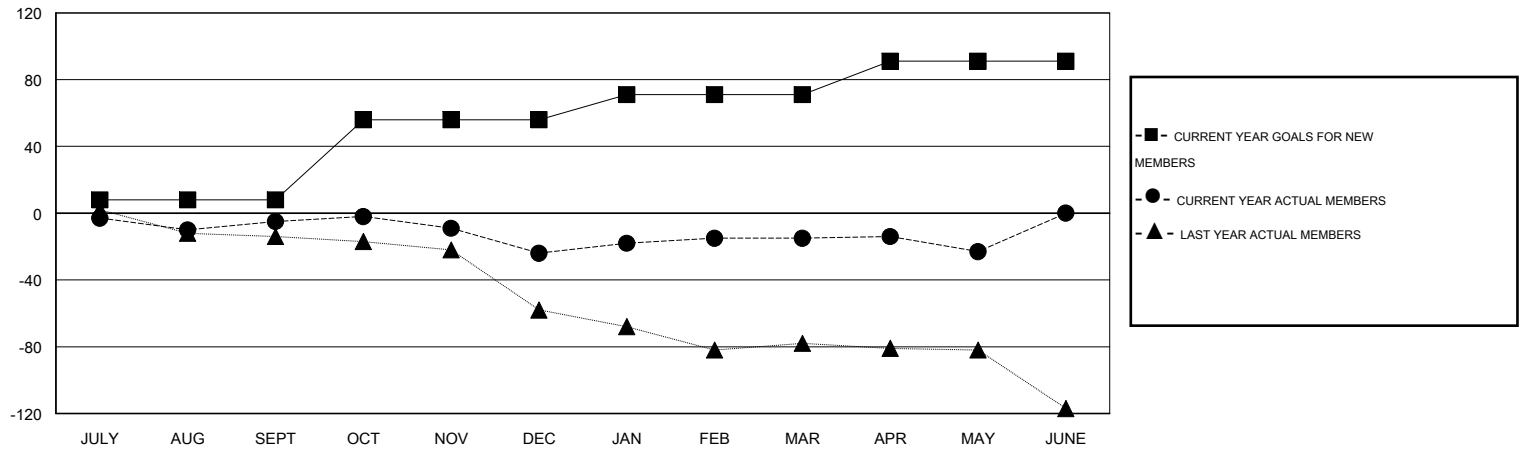
GMT CA 1

| Clubs                 |               |           |               |               | Members               |                 |                               |                 |               |
|-----------------------|---------------|-----------|---------------|---------------|-----------------------|-----------------|-------------------------------|-----------------|---------------|
| RESULTS FOR 2014-2015 |               |           |               |               | RESULTS FOR 2014-2015 |                 |                               |                 |               |
| QUARTER               | NEW CLUB GOAL | NEW CLUBS | DROPPED CLUBS | NET GAIN/LOSS | QUARTER               | NEW MEMBER GOAL | CHARTER AND NEW MEMBERS ADDED | DROPPED MEMBERS | NET GAIN/LOSS |
| JULY/AUG/SEPT         | 0             | 0         | 0             | 0             | JULY/AUG/SEPT         | 8               | 19                            | 24              | -5            |
| OCT/NOV/DEC           | 1             | 0         | 0             | 0             | OCT/NOV/DEC           | 48              | 15                            | 34              | -19           |
| JAN/FEB/MAR           | 0             | 0         | 0             | 0             | JAN/FEB/MAR           | 15              | 32                            | 23              | 9             |
| APR/MAY/JUNE          | 0             | 0         | 0             | 0             | APR/MAY/JUNE          | 20              | 20                            | 28              | -8            |

GOALS AND ACTUAL NEW CLUBS CUMULATIVE



GOALS AND ACTUAL MEMBERS CUMULATIVE



|                        |   |                                |
|------------------------|---|--------------------------------|
| DROPPED CLUBS: 0       | 27 CLUBS OF 46 ADDED 1 OR MORE NEW MEMBERS            | <b>GENDER DISTRIBUTION</b>     |
|                        |   | MALE 869 (72.90%)              |
|                        |   | FEMALE 323 (27.10%)            |
| <b>DROPPED MEMBERS</b> | <a href="#">CLICK HERE FOR HEALTH ASSESSMENT DATA</a> | <b>FAMILY UNIT MEMBERS</b> 225 |
| DECEASED 18            |   | HEAD OF HOUSEHOLD 106          |
| CLUB CANCELLED 0       |   | NON-HEAD OF HOUSEHOLD 119      |
| OTHER 91               |   |                                |
| <b>TOTAL</b> 109       |   |                                |